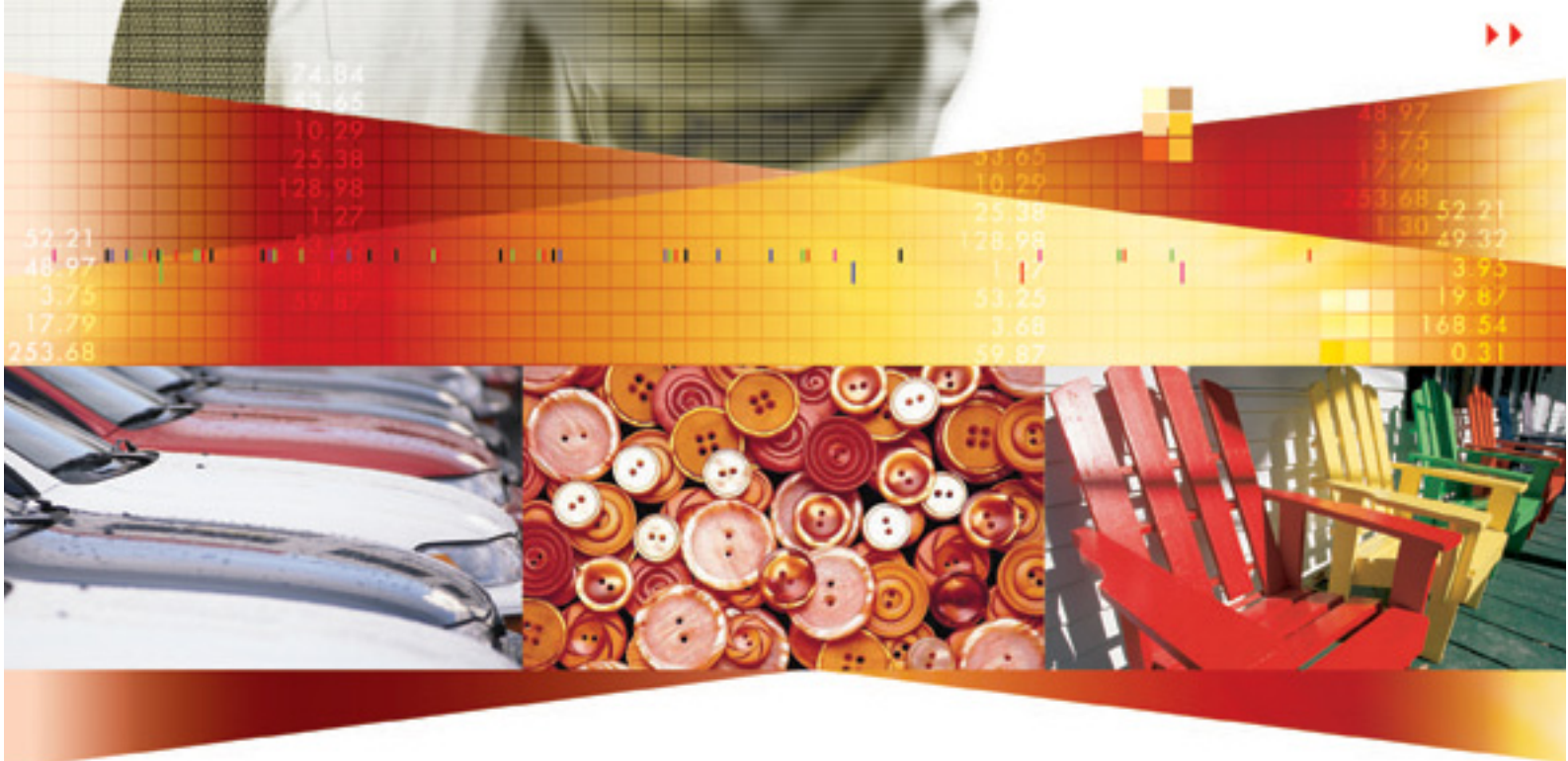


**datacolor** 

Introducing New

**chromacalc<sup>3.0</sup>**

**The Power of Simplicity**



**A revolution in color matching...**



## Formula Central™ Streamlines the Process

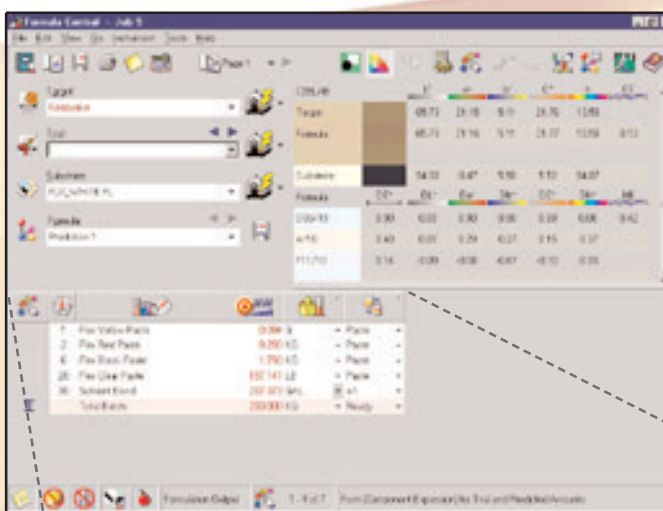
Everything you need from a single screen.

Match, Correct, Scale, Modify, Search, Evaluate and more – Formula Central lets you do anything to a formula from one screen. See formulas in a dynamic grid: like using a spreadsheet, change an ingredient amount or formula variable and see the results instantly without ever having to re-measure, recall, re-match or leave Formula Central!

ChromaCalc automatically adapts to the way YOU want to work.

ChromaCalc responds intelligently to available data from wherever you are in the color matching sequence. Simply measure a target and you're ready to match or search. If you just need a correction, select a trial and all functions pertaining to trials are automatically loaded – you never have to jump to separate correction and evaluation programs.

In Formula Central, formulas can be converted to any weight or volume unit. The conversions can be applied to an entire formula, a specific ingredient sub-total, or to individual ingredients in the formula.



		41.06	42.56	42.56	0.00 KG	= Ready	= 1.04
1	Flux Yellow						
2	Flux Red	6.38	5.23	6.63	3.40 KG	= Ready	= 0.02
3	Flux Black	1.31	1.04	1.35	0.32 KG	= Ready	= 0.00
4	Flux Blue	51.24	51.17	53.19	1.93 KG	= Ready	= 1.00
5	Total Color	40.76	40.00	50.54	1.71 KG	= Ready	=
6	Total Batch	100.00	100.00	103.64	3.64 KG	= Ready	=

The columns and rows in the grid adapt to different situations in the matching process. The grid reacts to specific user input and changes state automatically. This dynamic nature of the formula grid gives Formula Central its adaptive behavior and ease of use.

### ...finally, software that lets you work smarter

ChromaCalc's revolutionary new design helps you get more from your formulation system...

### Higher productivity Lower costs Better quality

Before ChromaCalc 3.0, using a color formulation program meant following someone else's idea of how you should work – too many steps – too many menus – too much time working the program instead of getting work done.

ChromaCalc 3.0 adapts to your workflow – simplifying the process.

## Improve Productivity

### Formula Central remembers the details for you.

Like a virtual notebook, a unique job record captures and stores every step in the color matching process. Browsing through your steps is as easy as turning a page.

Job templates save time and reduce errors because you'll never input the same data twice, making it easier to repeat the process.

### Fast, effective data management.

Keywords help you organize and use your data based on any physical property or data scheme. From hazard ratings or customer approval to lightfastness or order numbers, whatever you need to track can be easily queried.

### No more "all or nothing" defaults

Until now, configuring a color match meant searching through various programs to find the settings. Default settings were only available for certain options and some only on a global basis.

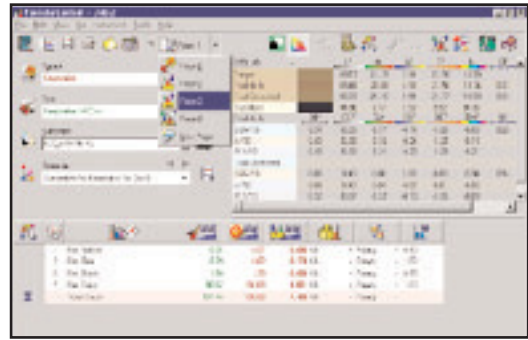
From basic substrates and colorant groups, to learning algorithms and matching methods, customizable job templates let you control everything from one place.

## Improve Quality

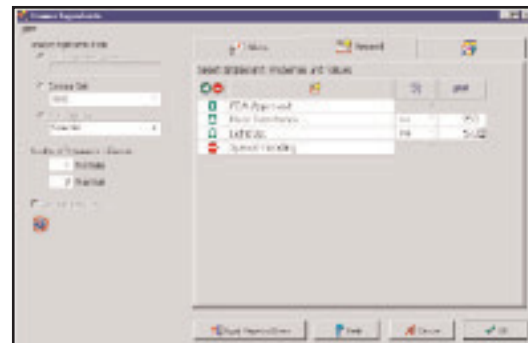
### Sounds easy to learn and use, but can it match color?

New Version 3.0 extends ChromaCalc's reputation for quality with industry exclusives like:

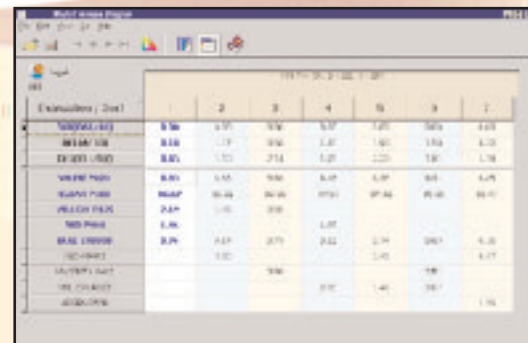
- New advanced matching optimizer that lets you weight formula results based on a variety of criteria. Select from DE for 1 to 5 illuminants, Metamerism Indices, Curve Fit, and Contrast Ratio or a combination.
- Interactive formula grid that lets you view formulas at the component level and base level for better accuracy.
- Gloss compensation that ensures color consistency between standards and varying product finishes.
- SmartMatch® that ensures more first-hit matches.



One click selects a page or you can navigate through a job record with forward and backward arrows.



Keywords let you define true/false or numeric properties for any ingredient, formula or sample. Associate values to keywords for complex queries.



Multiple formulas are shown in the Spreadsheet View. The formulas can be resorted from this form. Double-click on a formula and that formula will be put into the Formula Central formula grid.





## Chromacalc 3.0: Modern Robust Architecture

Datacolor used its decades of color management experience to create a totally new modular architecture. The result is a powerful and yet simple to use program – not just the same old formulation and correction routines hiding behind new windows.

### Chromacalc 3.0 Features

---

#### Formula Central

- All color matching and correction functions appear and run from one convenient screen.
- Formula Central starts fully configured and “ready-to-work,” for making new matches or past jobs.
- Quick to learn and use, Formula Central responds to the experience level of each user.
- Appropriate tools respond to available data. Users concentrate on their work rather than “running the computer.”
- Active displays allow changes directly to data where it is displayed – units, forms, scaling or film thickness.
- Integrated evaluation windows include 2-D graphics, 3-D graphics, color coordinates and differences.

---

#### Jobs and Templates

- The job is a virtual notebook, organizing and saving each step in the process.
- Job records provide a single location for all selections, settings, data, and results.
- When re-opened, jobs return to the last page, ready to work. Navigating past pages takes only a single mouse click.
- Any job can be used as a template to automatically setup similar jobs in the future.

---

#### Ingredients, Formulas, and Data Management

- Ingredients may have any number of levels of component ingredients.
- ChromaCalc remembers properties (cost, density, available usage dates, and color strength) for individual ingredient lots.
- Formulas and ingredients can be displayed at any level of component expansion.
- Any amount in ChromaCalc may be expressed using any weight or volume unit; formula amount units may be changed individually or all at once. The system immediately incorporates rounding effects into any evaluation.
- Changing a single displayed value instantly scales a formula using the selected ingredient, sub-total or total amount.
- Ingredients can be added to a formula at any time, right where it is displayed.
- Data Navigator manages all data in user-defined folders and sub-folders, just like Windows Explorer.
- Sybase’s ASA Database Management System – proven, fully supported, ODBC, standalone or network server.

---

#### Keyword Systems

- Manage ingredients, samples and formulas using any property that can be expressed as a number or true/false relation.
- Select data using operators including: “and,” “not,” “equals,” “less than,” and “greater than.”
- There is no limit to the number of keywords and operators available in a single query; create very powerful searches.

---

#### Color Matching and Correction

- Optical models are optimized for specific materials, ensuring optimum results for transparent, translucent or opaque products.
- ChromaCalc allows users to define a weighted-average score of up to five evaluations as the goal for all matching and correcting function.
- Gloss Compensation, Datacolor’s proprietary system for matching and correcting samples at varying gloss.
- Comprehensive formulation options include film thickness, opacity, and pigment loading (all considering tolerances).
- Colorant amounts in formulas can be limited to user-specified minimum and/or maximum values.
- Any formula ingredient may be specified as “must use.” Any ingredient or sub-total amount may be fixed in a formula by editing a single value in a cell of the formula grid.
- User selectable color matching methods include Smart Match, Search, Search and Correct, and Combinatorial.
- Custom Formula Sorting, a user-specified weighted function prioritizes formula sorting; considers color differences, CIE L\*a\*b\* coordinates, curve fit, opacity, metamerism, and cost criteria.

---

#### Color Correction

- Eliminate transitions between production addition or laboratory reformulation corrections.
  - Automatically calculate the best add to satisfy job requirements (color difference, metamerism, opacity...).
  - Production correction options include ability to find the best add to fit in a container, or to correct partial batches.
  - Combinatorial correction generates multiple combinations of ingredients for correcting a batch.
  - Powerful yet easy-to-use Manual Add functions instantly display the effects of formula changes.
  - Manual Add includes the capability to optimize any one or all formula amounts simultaneously, based on any available evaluation.
- 

Agent or local office stamp in this space

**Committed to Excellence. Dedicated to Quality.**  
**Certified to ISO 9001 in Manufacturing Centers Worldwide.**  
**www.datacolor.com**

**datacolor**   
*The Right Color—from Mind to Market*

#### Americas

+1.609.924.2189  
marketing@datacolor.com

#### Europe

+41.1.835.3711  
info@datacolor.com

#### Asia

+852.2420.8283  
infohongkong@datacolor.com

**In over 60 countries ... see [www.datacolor.com/locator.htm](http://www.datacolor.com/locator.htm) for a complete list.**